



Welcome New Registrant



College of
Midwives
of Ontario

Ordre des
sages-femmes
de l'Ontario

Congratulations on your registration with the College of Midwives of Ontario!

As a registered midwife in the **General class**, you are eligible to practise midwifery in Ontario in accordance with the [New Registrants Policy](#).

We have put together this guide to help you navigate your first year of practice!

Midwives registered in the **Supervised Practice class** should also note the information in this guide but are not subject to the New Registrants Policy until they become members in the General class.



New Registrant Conditions

In your first year of practice in the **General class**, you will have two conditions placed on your certificate of registration.

Condition 1: Only work within an established practice for a period of one year

Established practice is a practice in Ontario that has general registrant(s) without new registrant conditions attending births in both home and hospital settings. Established practices must have the capacity to support the orientation and mentorship of new registrants to the practice and hospital environments.

Condition 2: Attend a minimum of 30 births as a primary midwife as well as 30 births as a second midwife

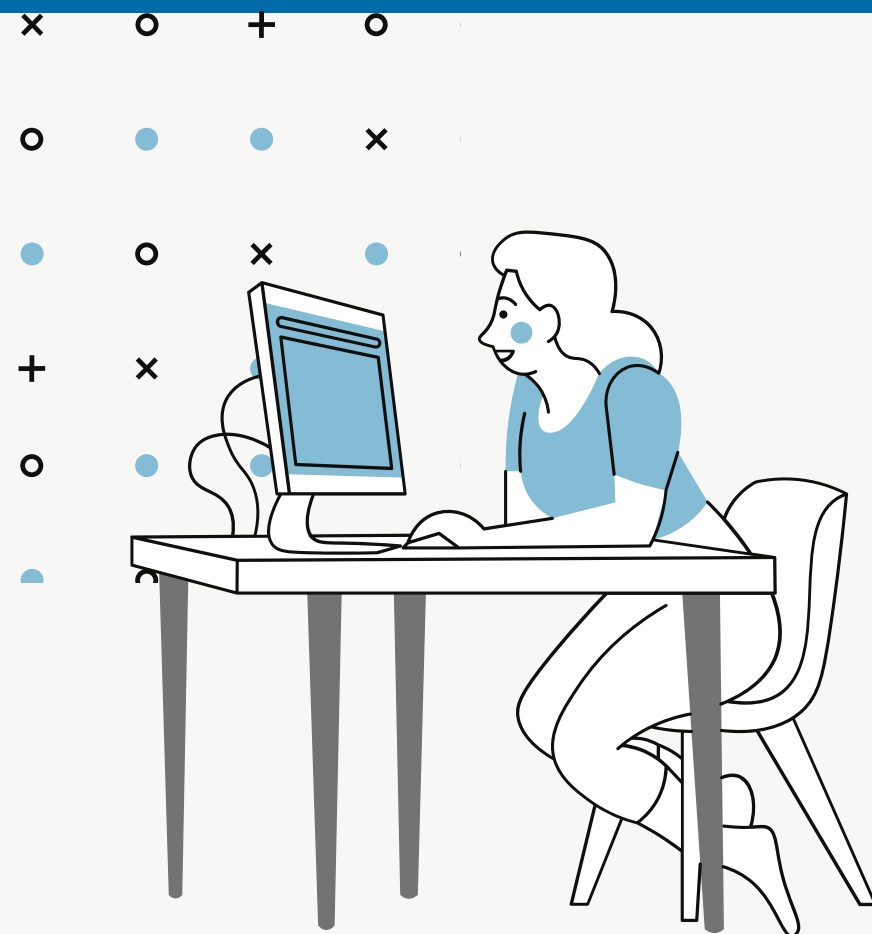
Prior to meeting this condition, a new registrant is permitted to attend births with: either a general registrant who is not subject to new registrant conditions, or a new registrant who has already attended a minimum of 30 births as a primary midwife as well as 30 births as a second midwife.

Once this condition has been met, a new registrant may attend births with another new registrant.

Member Portal

The Member Portal is used to maintain and update personal and professional information related to your registration with the College and Public Register profile.

All personal and practice information contained within the portal must be current and accurate at all times.

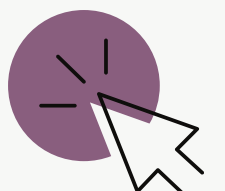


How to Log in:

1. Head to www.cmo.on.ca
2. In the top right corner, click "Member Portal"
3. Type in your email address and password you set while registering with the College

You will log into the Member Portal to update your information (including personal information, practice location, and hospital privileges/birth centre privileges). You can also renew your registration, submit your Active Practice and Quality Assurance Reports, access financial records and receipts, and access your Certificate of Registration in the Member Portal.

[Click to go straight to the Member Portal](#)





Your Registration Number

You are able to access your “annual registration card” as proof of your current registration. You can also download your Certificate of Registration to display at your place of practice directly from the Member Portal.

[Click to go straight to the Member Portal](#)





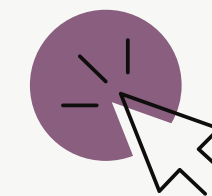
The Public Register "Find a Midwife"

The Public Register is a complete listing of midwives that have been registered with the College.

Its purpose is to provide clients and the public with information about Ontario midwives, which may assist them in deciding who to choose for their care.

You are responsible for ensuring your information is up-to-date and accurate. Please review your information regularly.

[Access the Public Register here.](#)



Stay Informed and Up-to-date

As a Registered Midwife, you are expected to be informed about:

- Legislation,
- Regulations,
- Standards of Practice,
- Policies,
- and the College's Guides and Guidelines governing midwifery in Ontario.

These are all available in the **Resource section** of the **College's website**. We'll update members as these documents are reviewed and revised, and invite you to take part in public consultations.

For additional information on ongoing member requirements, including the Quality Assurance Program and continuing competencies, please **visit the Midwives section of the website.**

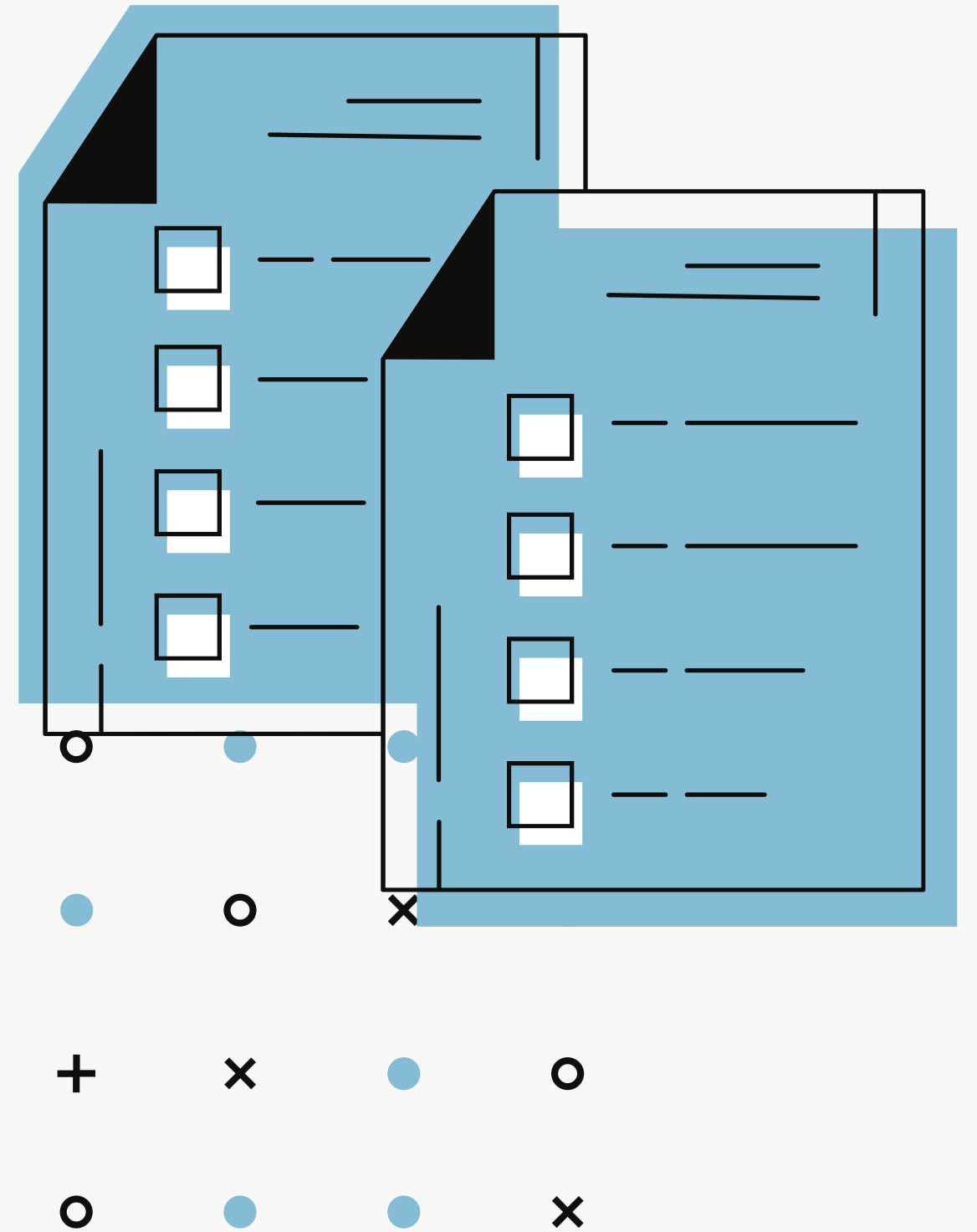
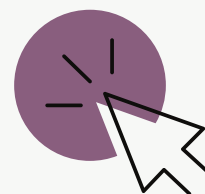


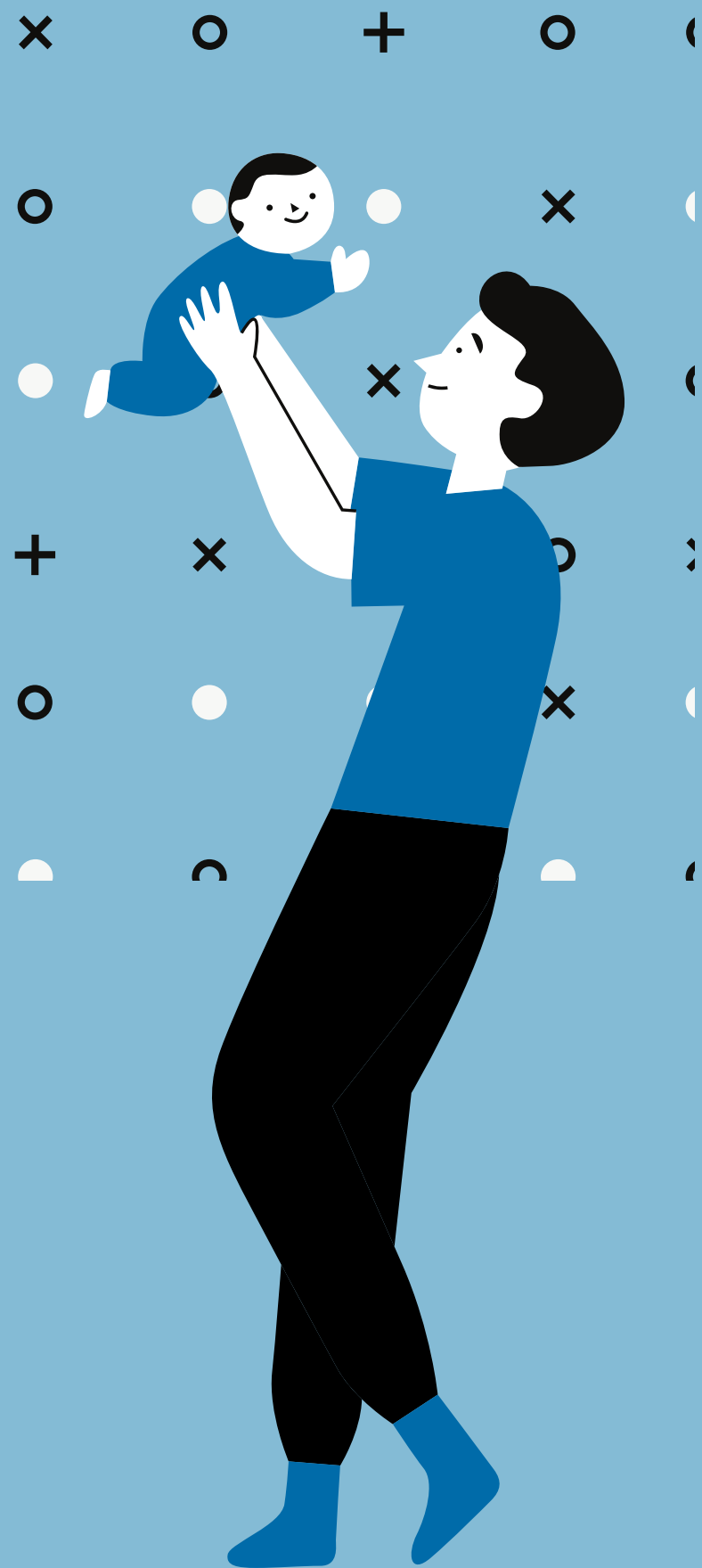
Standards of Practice

The Professional Standards for Midwives describes what is expected of all midwives registered with the College of Midwives of Ontario. They set out the College's minimum requirements regarding your practice and conduct, and help you achieve the best outcomes for your clients and the public.

It is your responsibility to be familiar with and comply with the Professional Standards.

[Review our Professional Standards for Midwives](#)





Continuing Competencies

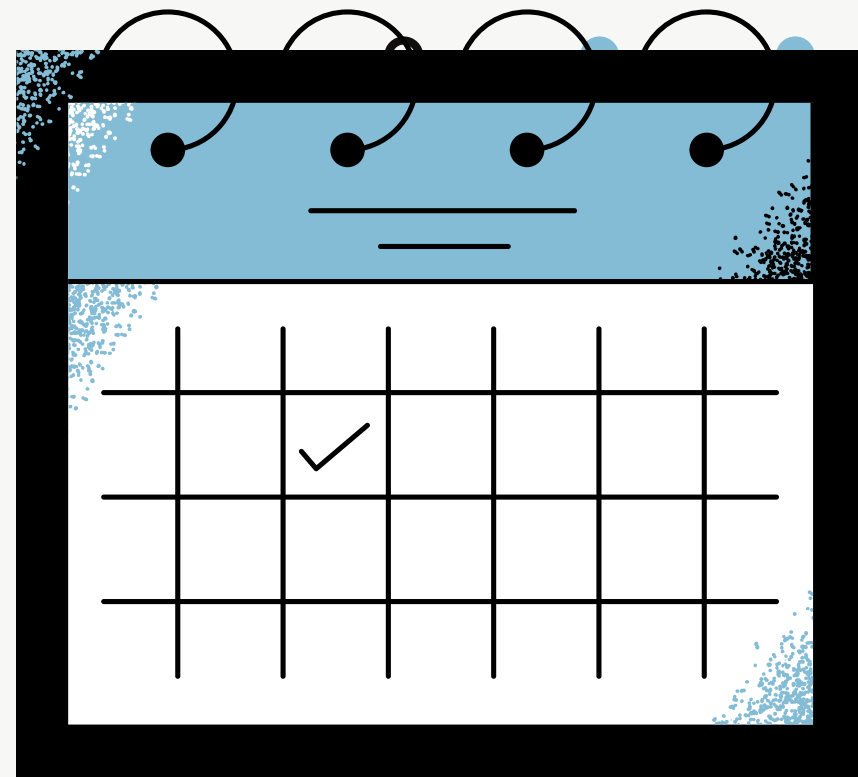
The Registration Regulation requires midwives to maintain current training in:

- Neonatal Resuscitation (annually)
- Emergency Skills (bi-annually)
- Cardiopulmonary Resuscitation (bi-annually)

[Click to review the College's Continuing Competency Requirements and Approved Courses.](#)

You will report your training to the College by October 1 of each year, while renewing your registration. Reporting on continuing competencies is done through the Member Portal.

Annual Registration Renewal

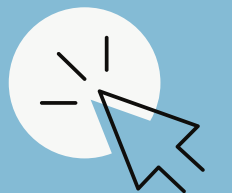


Midwives in Ontario must be registered with the College, and we use our registration process to ensure that those applying to become midwives meet all of our entry-to-practice requirements.

Following initial registration at the College, midwives are required to keep their membership up to date by renewing their registration annually, between **August 1 and October 1 each year.**

All midwives in Ontario must be members of the College, with the exception of Indigenous People who provide traditional midwifery services.

[Read more about renewing your registration with the College here.](#)



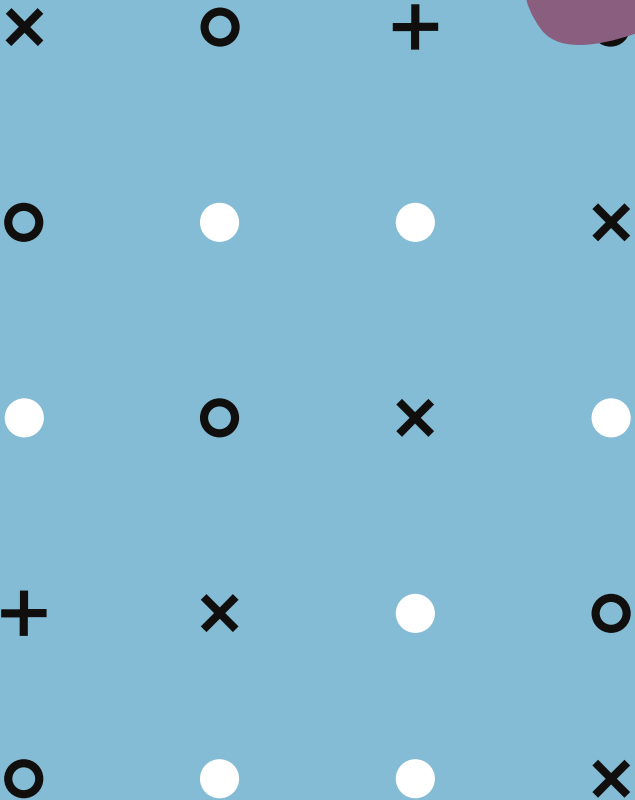
We'll be in touch!

The College sends out regular emails to all midwives with information about our guiding documents, public consultations, webinars, elections, and quarterly newsletters.

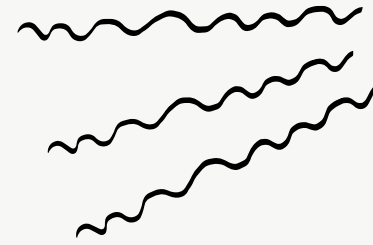
Look for our emails for important information.

Contact us

If you have any questions about your practice as a New Registrant please email or call the College. We offer professional practice advice to all midwives and can also direct you to a number of helpful resources including guides on our website.



Stay Connected



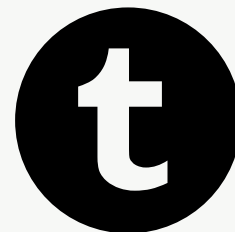
www.cmo.on.ca



facebook.com/CMO.ON.CA



cmo@cmo.on.ca



twitter.com/CMO_OSFO